

I. INTRODUCTION

This document describes the communication specification between the tester and prober:

1. Tester: FTI-1000
2. Prober: Wafer Prober Model P-8 Series

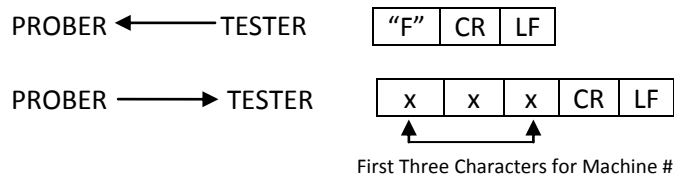
The GPIB interface is based on the wafer prober P-8 interface.

II. COMMAND AND DATA FORMATS

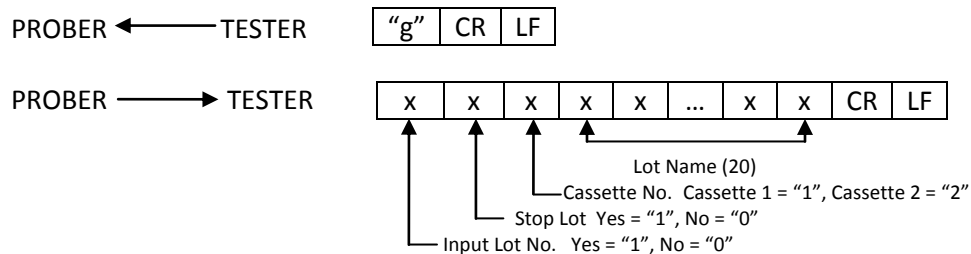
This section provides the right format when sending a command and data between the prober and tester.

A. Data reception of Prober

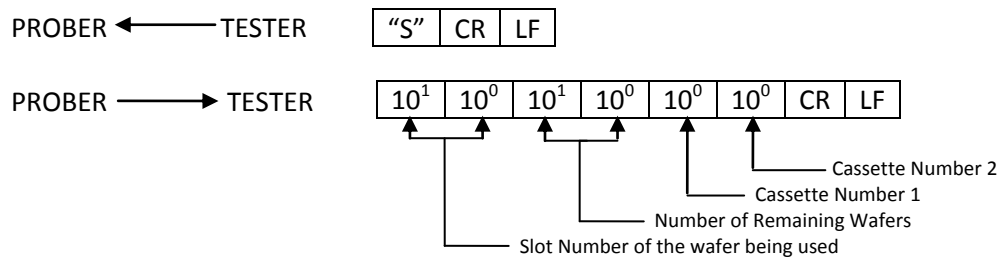
1.) "F" Command and Response



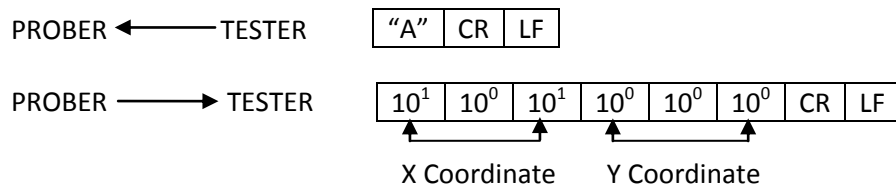
2.) "g" Command and Response



3.) "S" Command and Response



4.) "A" Command and Response

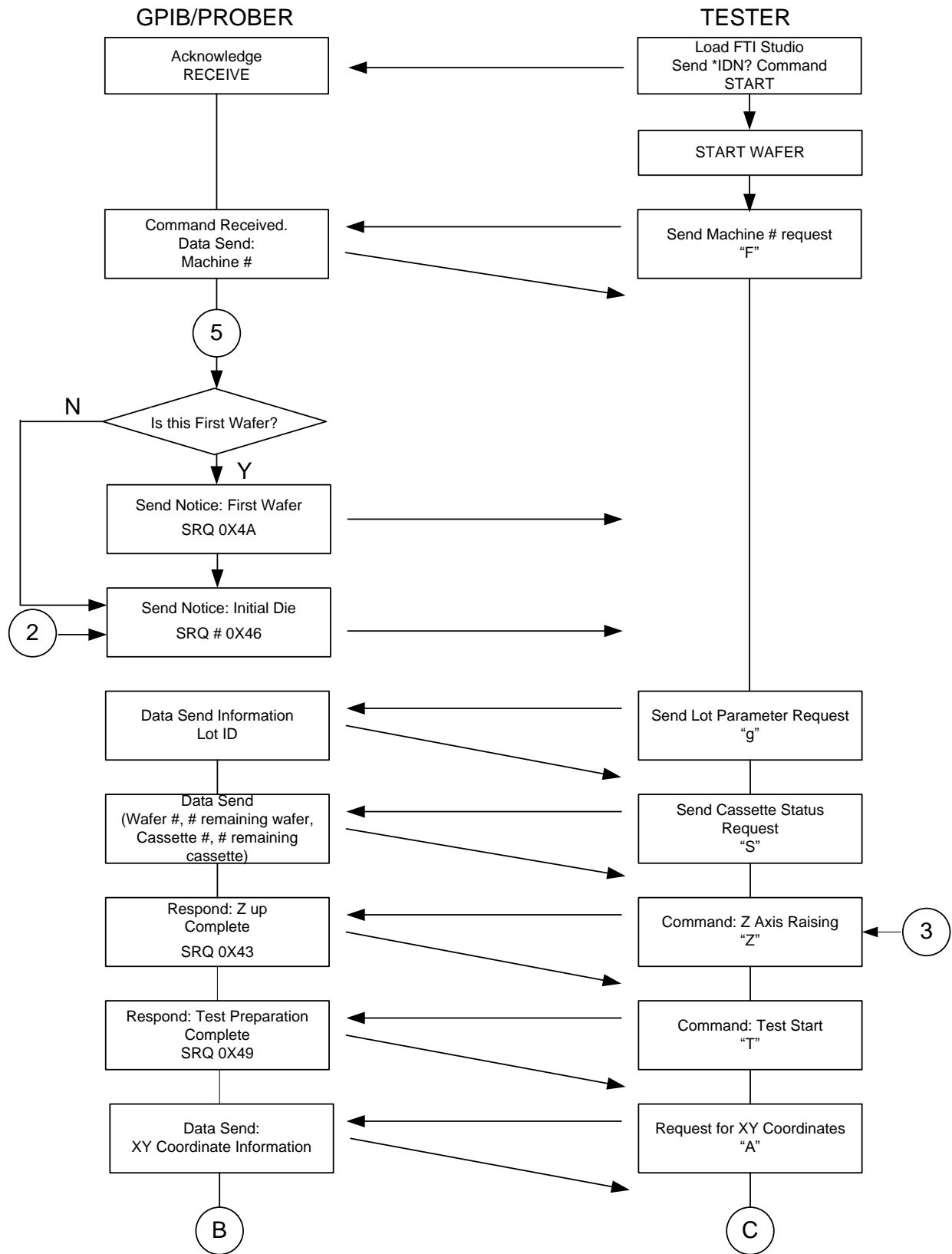


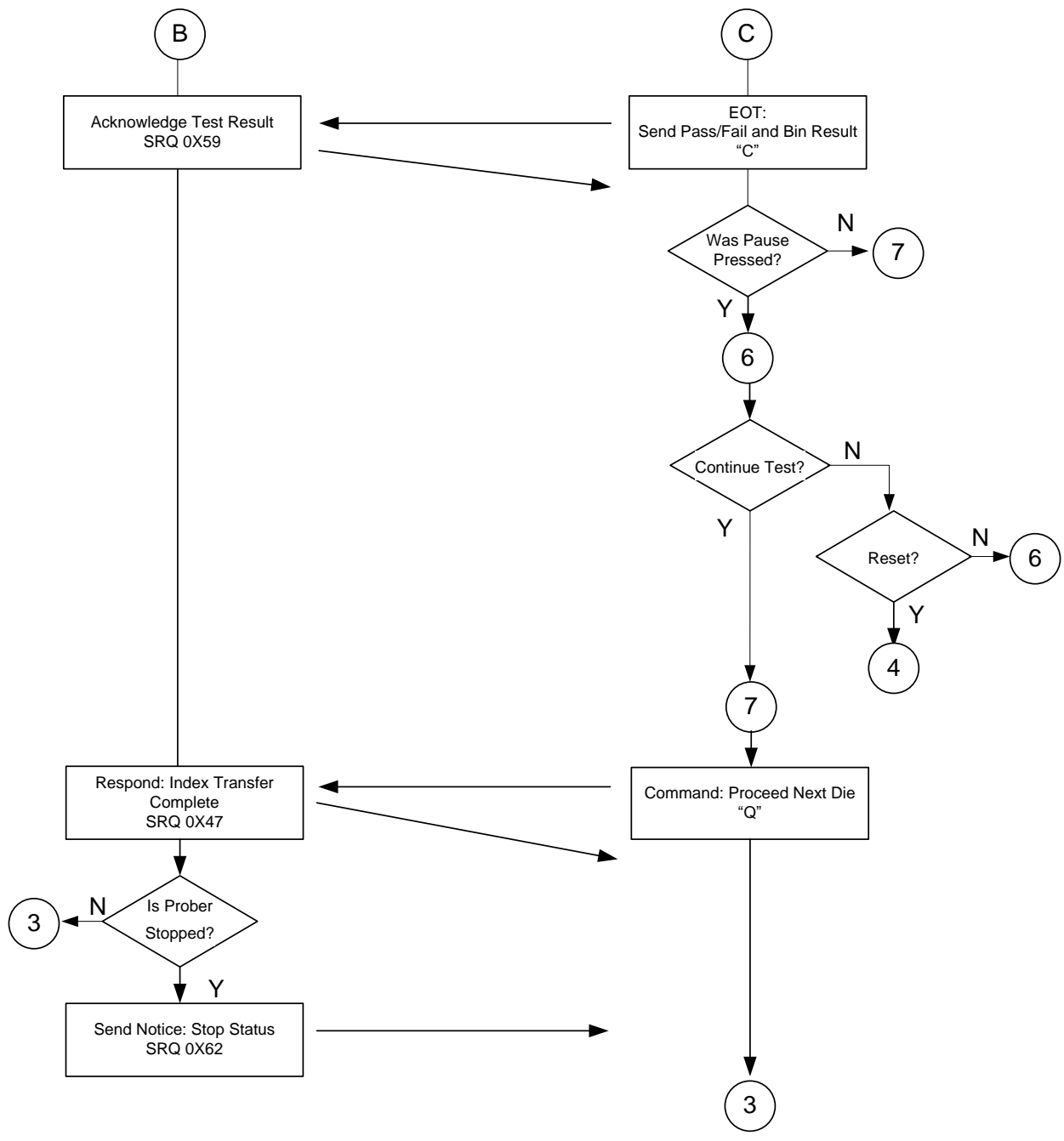
B. Data reception of Tester

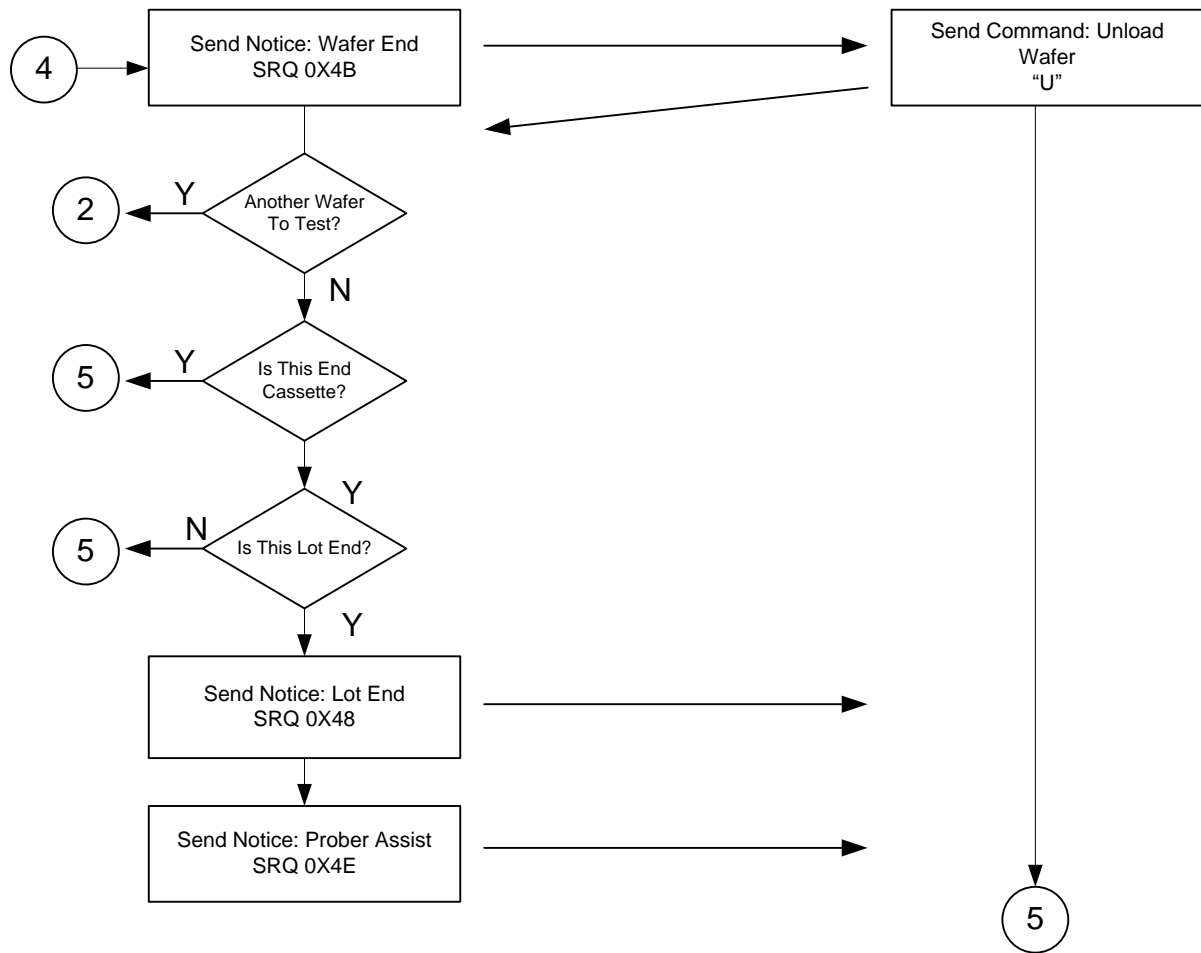
Please note that numbers following the SRQ are in hexadecimal notation, as shown below.

- 1.)
PROBER ← TESTER "Z" CR LF
PROBER → TESTER SRQ 0X43 or SRQ43(H)
- 2.)
PROBER ← TESTER "T" CR LF
PROBER → TESTER SRQ 0X49 or SRQ49(H)
- 3.)
PROBER ← TESTER "C" CR LF
PROBER → TESTER SRQ 0X59 or SRQ59(H)
- 4.)
PROBER ← TESTER "Q" CR LF
PROBER → TESTER SRQ 0X47 or SRQ47(H)

III. Communication Flow







IV. GPIB Command – SRQ Table

GPIB Command Table

COMMAND	CONTENTS	SENT DATA
A	XY Coordinates Request	Current XY Coordinates
C	Pass/Fail/Bin Input	SRQ 59(H)
F	Machine Number Request	Machine number
g	Lot Parameter Request	Lot Parameter
Q	Index (Fail input)	SRQ 47(H), 4B(H)
S	Cassette Status Request	Cassette Information
T	Test Start	SRQ 49(H), 51(H)
U	Unload Wafer	SRQ46(H), 48(H), 4E(H)
Z	Z Axis Raising	SRQ 47(H), 4B(H)

GPIB SRQ Table

COMMAND	CONTENTS	RELATED COMMAND
43(H)	Z UP Complete	Z
46(H)	Initial Die, Reference Die	U
47(H)	Index Transfer Complete	Q
48(H)	Lot End	U
49(H)	Test Preparation Complete	T
4A(H)	Initial Wafer	-
4B(H)	Wafer End	Q
4E(H)	Prober Assist	-
50(H)	Prober Error	-
59(H)	Process Complete	C
62(H)	Stop Status	-