

# Table Of Contents

<b>Overview</b>	<b>1</b>
<b>Setting Up FTIStudio</b>	<b>1</b>
Configuring Plugins To Use	1
FTI Library Database Plugin as Data Plugin	1
<b>Setting Up The LS2208 Barcode Reader</b>	<b>2</b>
Connect To Tester	2
Configure By Scanning Setup Barcodes	2
<b>Loading A Test Program Using The Barcode Scanner</b>	<b>3</b>

## Overview

FTIStudio supports using the Symbol LS2208 barcode scanner to input a barcode to use to select the test program to load into FTIStudioProduction.

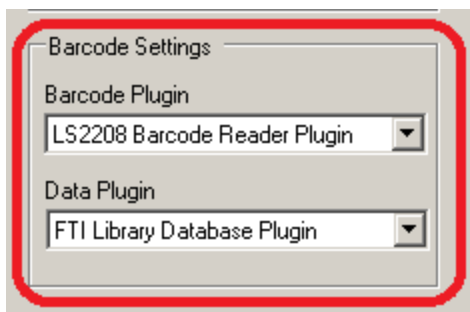
This document describes how to setup FTIStudio and the LS2208 barcode scanner for this functionality.

## Setting Up FTIStudio

### Configuring Plugins To Use

A 'Barcode Plugin' and a 'Data Plugin' must be selected under the 'Barcode Settings' group on the main FTIStudio options tab. (The 'Barcode Plugin' is responsible for getting the barcode value and the 'Data Plugin' is responsible for identifying the matching test program to be loaded into FTIStudioProduction.)

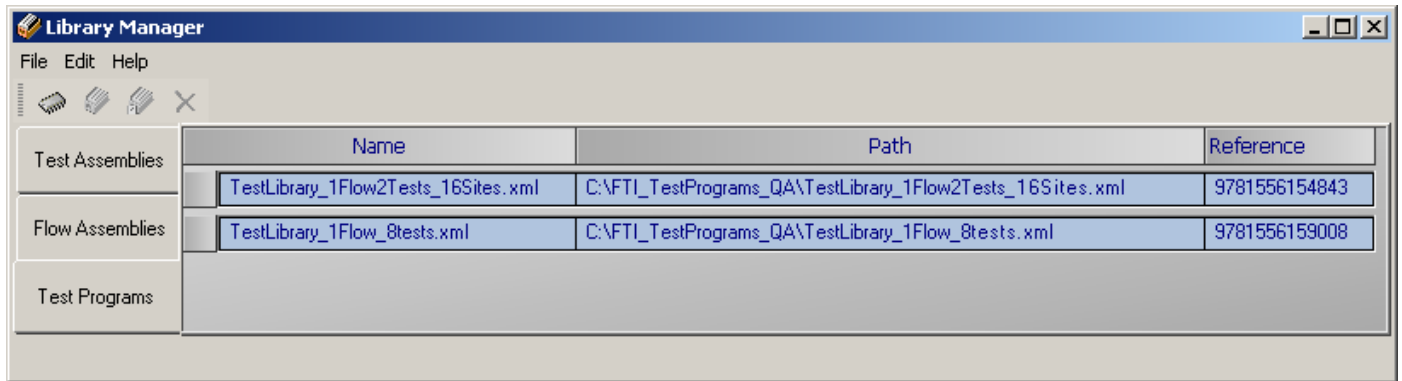
For example:



### FTI Library Database Plugin as Data Plugin

This is by far the simplest 'Data Plugin' to use. It uses entries added to the 'Test Programs' tab in Library Manager.

In the picture below, the 'Path' column holds the full path to the test program location and the 'Reference' column holds the barcode value.



## Setting Up The LS2208 Barcode Reader

### Connect To Tester

The LS2208 barcode reader simply plugs into a USB port.

It will typically show up in Device Manager under the 'Human Interface Devices' (HID) group and called 'USB Input Device'.

### Configure By Scanning Setup Barcodes

There are two barcodes that need to be scanned to setup the scanner for use.

See the Motorola LS2208 Quick Start Guide PDF document on the FTI document share under 'Barcode Scanner' for the the barcodes needed for setup. For clarity, the two barcodes are:

1. Set (Factory) Defaults

### **Set Defaults Bar Code**



**Set Factory Defaults**

2. IBM Hand-Held USB

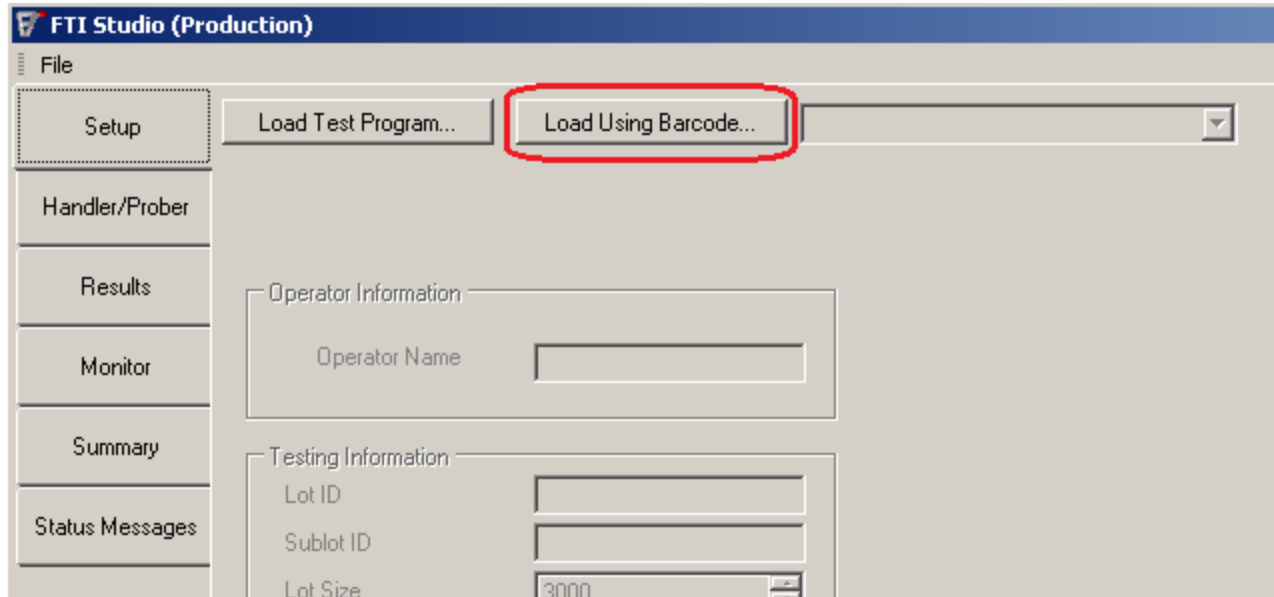


**IBM Hand-Held USB**

Once the LS2208 barcode reader has been setup, it is ready to use with FTIStudioProduction.

## Loading A Test Program Using The Barcode Scanner

When both the Barcode and Data plugins have been configured in FTIStudio options, the 'Load Using Barcode' button on the main FTIStudioProduction form will be enabled.



At this point, scan an appropriate barcode and the test program associated with it in Library Manager will be automatically loaded.